

- 3-CCT (3000K/4000K/5700K) selectable
- Deep recessed diffuser to reduce glare
- Switch on the back to select CCT
- 13W, 1000-1250lm
- Equipped with 2-pin Australia AS3112 plug, ready to plug-in
- Triac dimmable
- IC-4 insulation rated, can be covered by insulating material during insulation
- 90° beam angle
- Lifetime 40,000 hrs



Order Code 66325

General Data

Lamp Socket	Integrated downlight
Design	Deep Recessed diffuser

Geometric Data

Height (mm)	97.3mm (including LED driver)
Diameter (mm)	145mm
Weight (g)	TBC

Electric Data

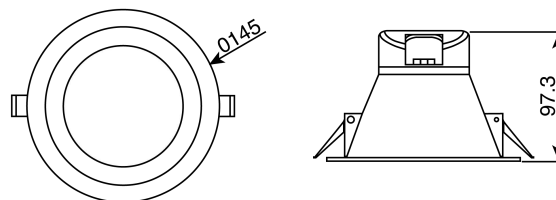
Wattage	13W
Voltage	220-240 V AC
Power Factor	≥0.9
Operating Frequency	50/60 Hz

Photometric Data

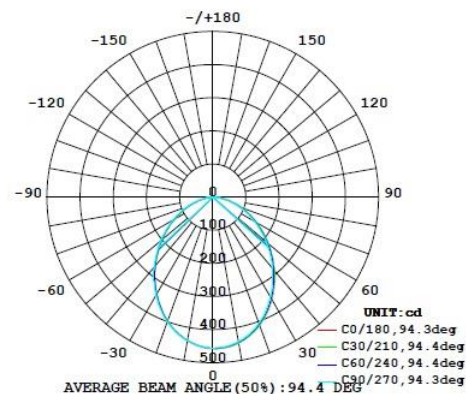
Total Luminous Flux (lm)	1000-1250lm
90° cone Luminous Flux (lm)	N/A
CRI	≥80
CCT	3000K/4000K/5700K
Luminous Intensity (cd)	TBC (measured at 4000K)
Beam Angle (°)	90°
Lifetime	40,000 hrs

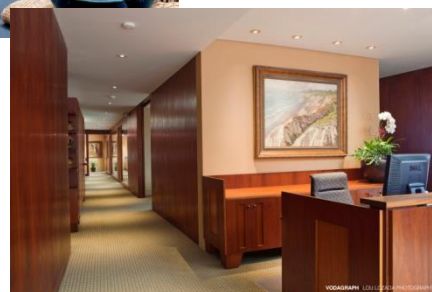
Equivalent to (W)

Operating Temperature: -20° to 45°



LUMINOUS INTENSITY DISTRIBUTION DIAGRAM





Order Code

66325

Product Description

Verbatim LED recessed downlight (deep recessed) 13W
CCT selectable 1000-1250lm with AU plug (125/145mm)

Technical Packaging Details

Giftbox Barcode	6943760263251
Inner Carton Barcode	N/A
Outer Carton Barcode	26943760263255
Pack Dimensions (LxWxH)	155 mm x 155 mm x 107 mm
Pack Weight	TBC
Carton Qty (Shipping Unit)	24
Carton Dimensions (LxWxH)	480 mm x 325 mm x 450 mm
Cartons/Layer	6
Layers/Pallet	2
Units/Pallet	288