



LINEAR-Q TOUGH™ IK BATTEN

BUILT TOUGH TO SURVIVE THE ELEMENTS

FEATURES AT A GLANCE



- IK10 vandal-proof
- 600mm or 1200mm
- Dual wattage for 1200mm
- Up to 140lm/W
- Tri-colour 4000K/5000K/6000K (3000K on request)
- Contractor friendly - captive anti-tamper screws, extra large terminal blocks and gear tray with safety lanyard
- Aluminium base and anti-tamper fixings
- Optional emergency and occupancy/daylight sensing sensor options with optional remote control
- Rear or side cable entry, surface mount or suspended
- Complies to AS/NZS emergency standards

WARRANTY



Linear-Q Tough IK Battens include a seven year warranty. Warranty is based on maximum usage of 35,000hrs. Motion Sensor models include a five year warranty based on 25,000hrs. The battery included in emergency models should be replaced every 12 months. See warranty document for more details.

APPLICATIONS



CAR PARKS



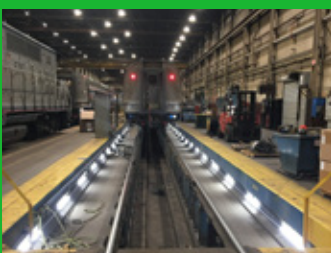
RAILWAY PLATFORMS



CORRECTIONAL FACILITIES



TRANSPORT



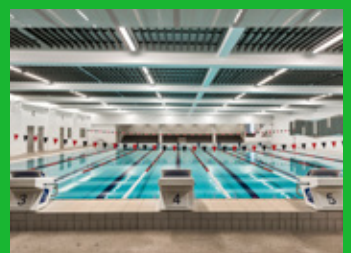
MAINTENANCE PITS



TEMPORARY LIGHTING

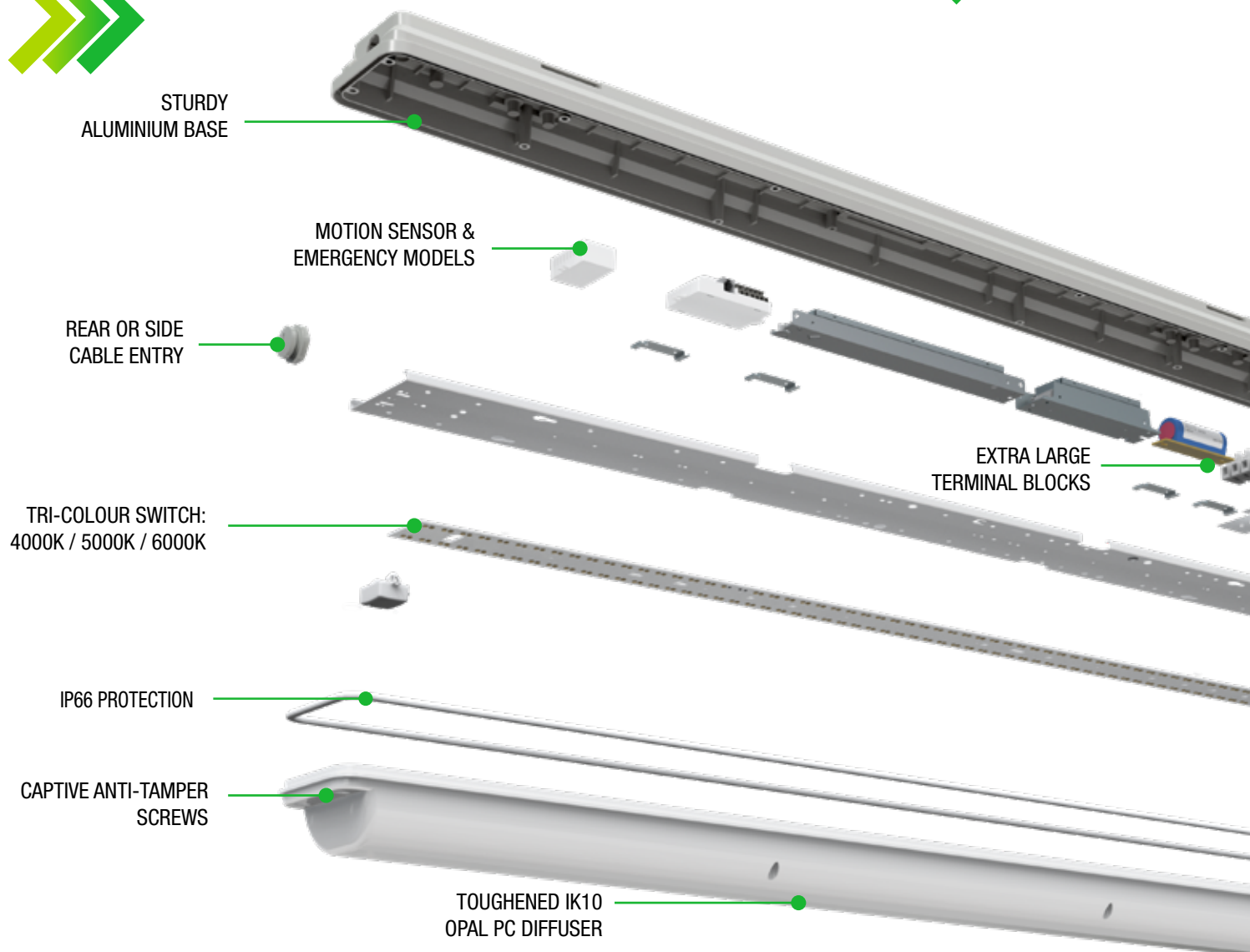


PUBLIC AMENITIES



SCHOOLS

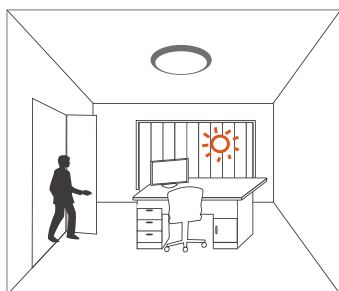
FEATURES



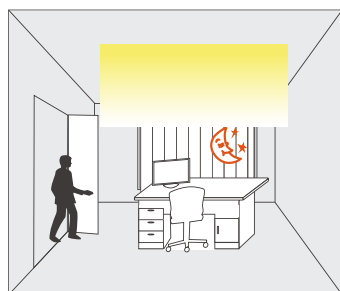
STEP-DIM FUNCTION



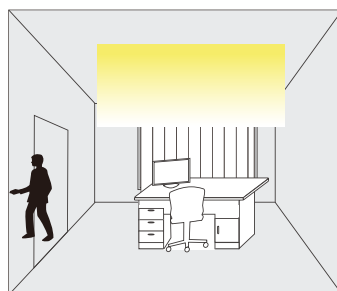
The motion detector can turn on the light based on movement. With this detector built in, light is automatically on when needed and dimmed to preset level before it is totally off.



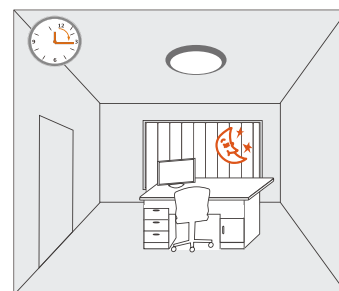
The light keeps off during daytime even when movement is detected. (Ambient lux level is above preset daylight threshold.)



With movement and insufficient ambient lux level, the light is triggered on by dimming the detector.



If there is no more movement, the light dims to stand-by dimming level after hold-time.

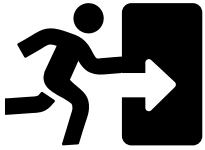


The light turns off automatically after stand-by time.

EMERGENCY MODELS



Emergency versions come with a self-testing feature that auto-performs testing to ensure the battery and lamp in each emergency light is fully operational. A visual LED warning is displayed if a problem is detected.



SELF-TEST FEATURE

LED INDICATOR



- MAINTAINED & NON-MAINTAINED OPTIONS
- EMERGENCY MODELS AVAILABLE WITH MOTION SENSOR

SENSOR MODELS



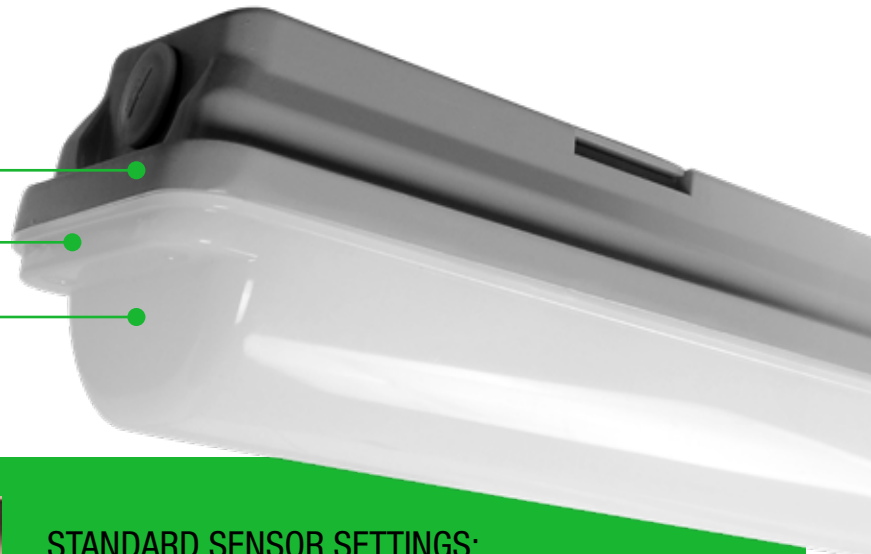
Linear Q Tough offers a built in smart sensor. This enables motion or daylight sensing. A remote control is optional and allows the user to set a hold time, a standby dimming level, a detection range, daylight sensing and various other features.



STEP DIMMING FUNCTION

DUAL LEVEL TO SAVE ENERGY

REMOTE CONTROL COMES WITH THE
OPTION OF 4 PRE-SET SETTINGS



STANDARD SENSOR SETTINGS:

- SENSITIVITY: 100%
- HOLD TIME: 20 MINUTES
- DAYLIGHT THRESHOLD: DISABLE
- STANDBY TIME: 10 MINUTES
- STANDBY DIMMING LEVEL: 50%

TECHNICAL DETAILS

KEY FAMILY DETAILS

| | |
|---------------------------|--|
| Dimming | 1-10V Dimmable, Casambi and motion sensor optional |
| Colour | Grey |
| Body | Opal Diffuser - PC, Housing - Aluminium Die Cast |
| Protection rating | IP66 |
| Input Voltage | 220 - 240Vac |
| Power Factor | 0.90 |
| Efficacy | up to 140lm/W |
| CRI | >80 |
| Beam Angle | 120° |
| Impact rating | IK10 |
| Operating Range Ta | -30°C to +45°C |
| Storage Temperature | -40°C to +60°C |
| Humidity (non-condensing) | 10-100% |
| EMC | AS/NZS CISPR15 (C-Tick) |
| Electrical Safety | 'AS/NZS 60598.2.1 |

SENSOR VERSION SPECIFICATIONS (LL4LQTM61, LL4LQTM122)

| | |
|------------------------|--------------------------------------|
| Operating Voltage | 240Vac |
| Rated Load | 800W @ 240Vac |
| HF System | 5.8Ghz +/- 75Mhz |
| Power Consumption | <1W - Stand by |
| Dim Control Output | 0-10V |
| Detection Radius/Angle | 30° ~ 150° |
| Mounting Height | Max. 6m |
| Detection Range | Max Dia 12m @ 3m Installation height |
| Remote Range | 15m |
| Transmission Power | <0.2mW |
| Working Temperature | -20°C ~ 50°C |

EMERGENCY VERSION SPECIFICATIONS (LL4LQTE61, LL4LQTE122, LL4LQTE122)

| | |
|---------------------|--------------------|
| Operating Time | 90 minutes |
| Recharge Time | 16 hours |
| Power | 2.3W |
| Lumen Output | 350lm |
| Battery Type | LifePO4 3.2V 3.3Ah |
| Spacing | LifePO4 3.2V 3.3Ah |
| Mounting Height | C0-D50, C90-D32 |
| Working Temperature | -20°C ~ 50°C |

TECHNICAL PARAMETERS

| Model Numbers | LL4LQT61 | LL4LQTM61 | LL4LQTE61 | LL4LQT122 | LL4LQTM122 | LL4LQTE122 | LL4LQTE122 |
|-----------------|------------|------------|------------|---------------|---------------|---------------|---------------|
| Power | 17W | 18W | 20W | 18W/35W | 19W/37W | 20W/38W | 22W/40W |
| Lumens @5000K | 2300lm | 2300lm | 2300lm | 2450lm/4900lm | 2450lm/4900lm | 2450lm/4900lm | 2450lm/4900lm |
| Dimensions (mm) | 650x110x95 | 650x110x95 | 650x110x95 | 1150x110x95 | 1150x110x95 | 1150x110x95 | 1150x110x95 |
| Weight (Kg) | 2.00 | 2.10 | 2.30 | 3.45 | 3.55 | 3.75 | 3.85 |
| Motion Sensor | N/A | Yes | N/A | N/A | Yes | N/A | Yes |
| Emergency | N/A | N/A | Yes | N/A | N/A | Yes | Yes |

TOUGH RANGE



Linear-Q Tough IK Battens aren't the only "tough" products available from Verbatim Lighting. Visit our website or talk to your local Verbatim Lighting sales representative for more information and product range.



+61 (03) 9790 8999

lighting@verbatim.com.au

verbatimlighting.com.au

