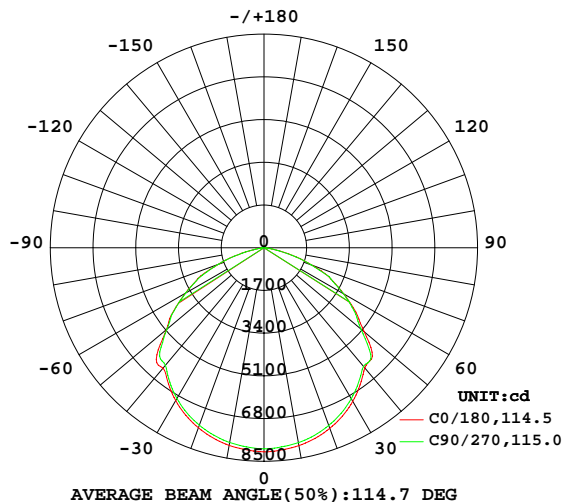


LUMINAIRE PHOTOMETRIC TEST REPORT

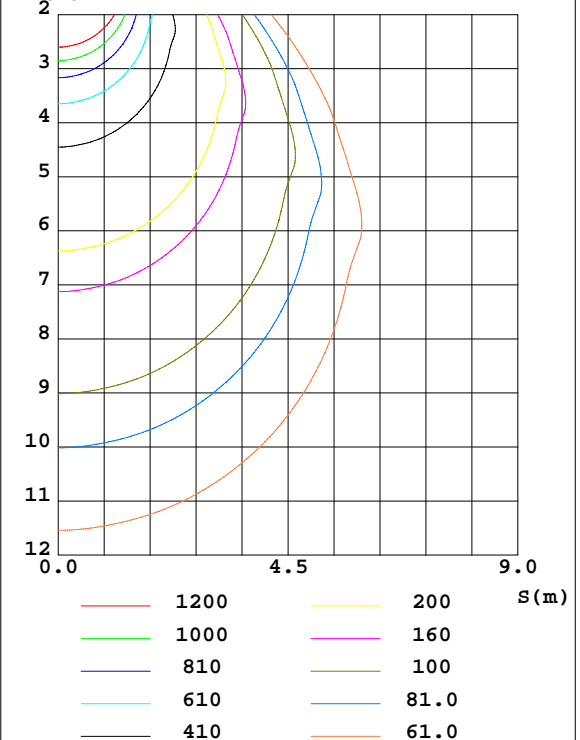
Test:U:220.05V I:0.6917A P:150.44W PF:0.9883 Freq:49.99Hz Lamp Flux:23218.1lx1 lm		
NAME: UHB1015-150W	TYPE:	WEIGHT:
SPEC.: 260*260	DIM.:	SERIAL No.: 20200615008
MFR.:	SUR.: 260*260	Shielding Angle:

DATA OF LAMP		PHOTOMETRIC DATA Eff: 154.33 lm/W			
MODEL	UHB1015-150W	I <sub>max</sub> (cd)	8123	S/MH(C0/180)	1.29
NOMINAL POWER(W)	150	LOR(%)	100.0	S/MH(C90/270)	1.29
RATED VOLTAGE(V)	220	TOTAL FLUX(lm)	23218	η UP,DN(C0-180)	0.6,49.6
NOMINAL FLUX(lm)	23218.1	CIE CLASS	DIRECT	η UP,DN(C180-360)	0.7,49.1
LAMPS INSIDE	1	η up(%)	1.3	CIBSE SHR NOM	1.50
TEST VOLTAGE(V)	220	η down(%)	98.7	CIBSE SHR MAX	1.50

LUMINOUS INTENSITY DISTRIBUTION DIAGRAM



C0 PLANE ISOLUX DIAGRAM (UNIT:lx)



C Range: 0 - 360DEG  
C Interval: 22.5DEG  
Test Speed: HIGH  
Temperature:25.3DEG  
Operators:DAMIN  
Test Date:15 June 2020

γ Range: 0 - 180DEG  
γ Interval: 1.0DEG  
Test System:EVERFINE GO-2000B\_V1 SYSTEM V2.00.426  
Humidity:65.0%  
Test Distance:7.550m [K=1.0000]  
Remarks:

## ZONAL FLUX DIAGRAM

### ZONAL FLUX DIAGRAM:

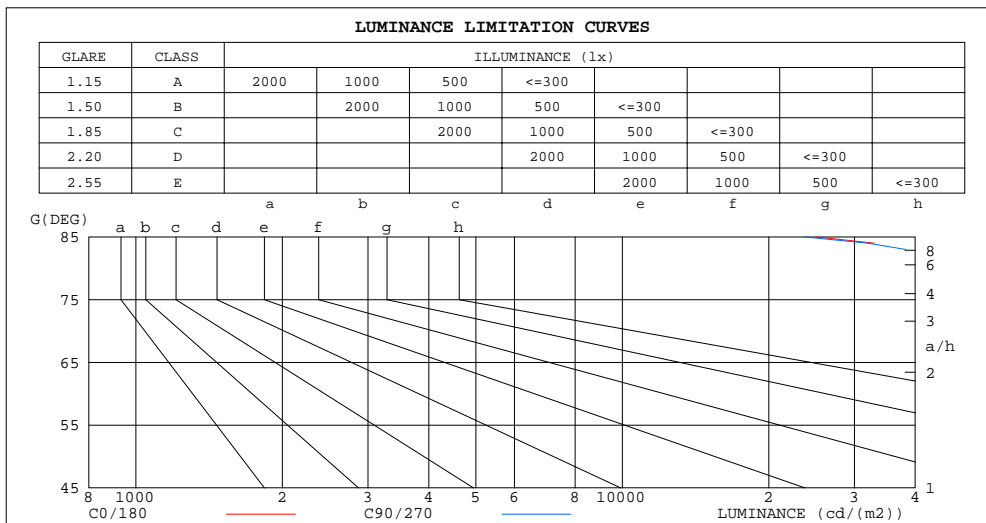
$\gamma$	C0	C45	C90	C135	C180	C225	C270	C315	$\gamma$	$\Phi$ zone	$\Phi$ total	$\%lum, lamp$
10	7996	7933	7876	7832	7985	7915	7869	7845	0- 10	758.9	758.9	3.27,3.27
20	7650	7590	7528	7481	7626	7562	7516	7506	10- 20	2189	2947	12.7,12.7
30	7061	6998	6941	6886	7026	6958	6928	6922	20- 30	3357	6304	27.2,27.2
40	6240	6190	6164	6137	6253	6177	6102	6103	30- 40	4109	10414	44.9,44.9
50	5203	5153	5041	5001	5069	5040	5041	5063	40- 50	4496	14910	64.2,64.2
60	3654	3646	3639	3543	3597	3554	3590	3585	50- 60	3887	18797	81,81
70	2051	2037	2004	1932	1940	1918	1946	1973	60- 70	2803	21600	93,93
80	410.4	428.8	393.6	362.6	344.2	328.0	333.2	394.4	70- 80	1187	22788	98.1,98.1
90	37.99	37.82	37.55	37.35	40.30	40.05	39.78	39.58	80- 90	137.1	22925	98.7,98.7
100	39.15	38.97	38.76	38.72	42.00	41.81	41.42	41.13	90-100	42.90	22968	98.9,98.9
110	47.06	41.43	41.20	41.15	50.56	44.91	44.30	44.09	100-110	43.96	23012	99.1,99.1
120	49.58	43.92	43.35	43.55	54.91	47.82	47.15	46.94	110-120	44.92	23057	99.3,99.3
130	46.75	46.58	45.72	45.93	51.29	50.46	49.77	49.93	120-130	42.68	23099	99.5,99.5
140	48.93	49.06	48.48	48.59	53.24	52.87	52.10	52.43	130-140	38.24	23138	99.7,99.7
150	51.79	52.64	51.58	52.27	55.93	55.82	54.97	55.14	140-150	32.73	23170	99.8,99.8
160	55.82	56.64	55.96	55.86	58.53	58.38	58.47	58.02	150-160	25.60	23196	99.9,99.9
170	59.78	59.46	58.92	58.74	59.82	59.22	59.33	58.97	160-170	16.54	23213	100,100
180	59.68	59.45	58.87	58.74	59.85	59.59	58.98	58.81	170-180	5.644	23218	100,100
DEG	LUMINOUS INTENSITY:cd									UNIT:lm		

C Range: 0 - 360DEG  
C Interval: 22.5DEG  
Test Speed: HIGH  
Temperature:25.3DEG  
Operators:DAMIN  
Test Date:15 June 2020

$\gamma$  Range: 0 - 180DEG  
 $\gamma$  Interval: 1.0DEG  
Test System:EVERFINE GO-2000B\_V1 SYSTEM V2.00.426  
Humidity:65.0%  
Test Distance:7.550m [K=1.0000]  
Remarks:

## LUMINANCE LIMITATION CURVES

Test:U:220.05V I:0.6917A P:150.44W PF:0.9883 Freq:49.99Hz Lamp Flux:23218.1x1 lm		
NAME: UHB1015-150W	TYPE:	WEIGHT:
SPEC.: 260*260	DIM.:	SERIAL No.: 20200615008
MFR.:	SUR.: 260*260	Shielding Angle:



LUMINANCE cd/(m2)		
G(DEG)	C0/180	C90/270
85	24985	23537
80	65103	62449
75	123360	123426
70	165171	161391
65	190861	191724
60	201312	200513
55	214393	210293
50	222997	216046
45	237541	234168

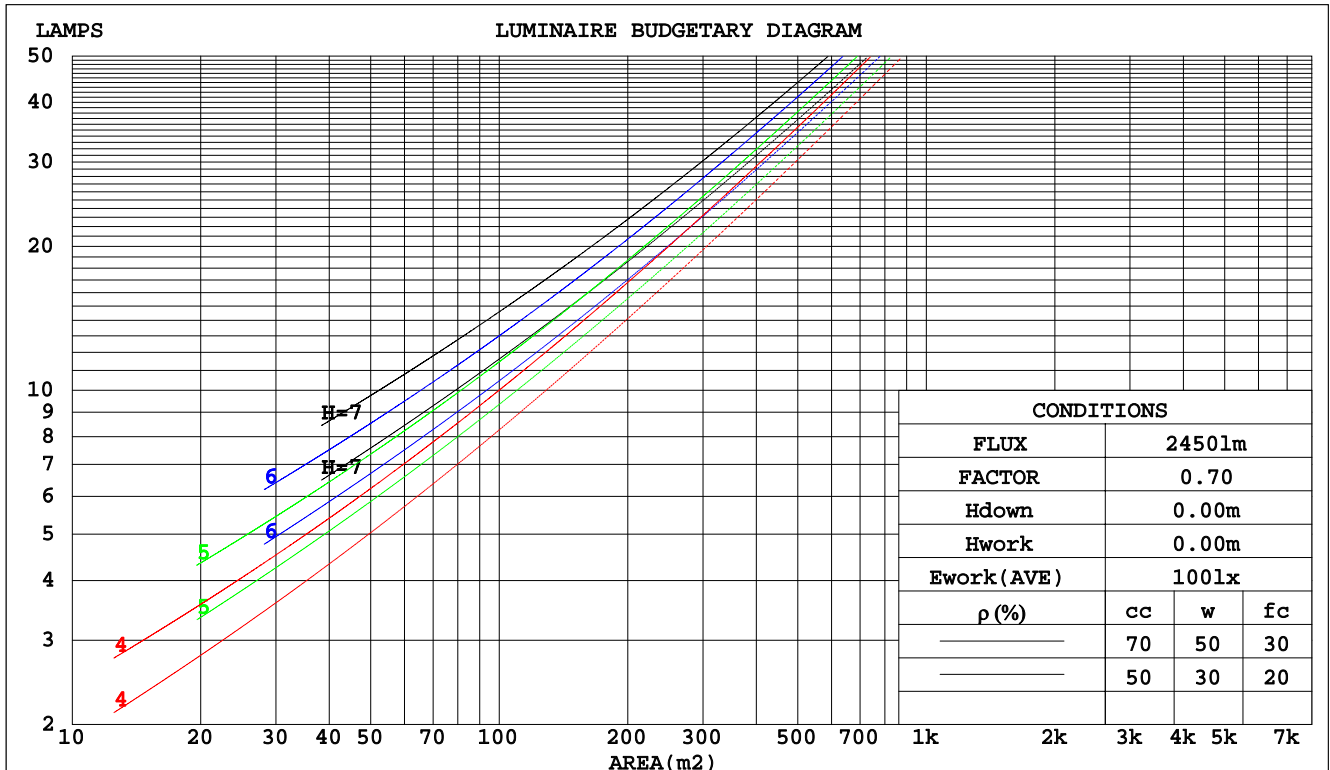
C Range: 0 - 360DEG  
C Interval: 22.5DEG  
Test Speed: HIGH  
Temperature: 25.3DEG  
Operators: DAMIN  
Test Date: 15 June 2020

$\gamma$  Range: 0 - 180DEG  
 $\gamma$  Interval: 1.0DEG  
Test System: EVERFINE GO-2000B\_V1 SYSTEM V2.00.426  
Humidity: 65.0%  
Test Distance: 7.550m [K=1.0000]  
Remarks:

CU AND LUMINAIRE BUDGETARY ESTIMATE DIAGRAM

Test:U:220.05V I:0.6917A P:150.44W PF:0.9883 Freq:49.99Hz Lamp Flux:23218.1x1 lm		
NAME: UHB1015-150W	TYPE:	WEIGHT:
SPEC.: 260*260	DIM.:	SERIAL No.: 20200615008
MFR.:	SUR.: 260*260	Shielding Angle:

pcc	80%			70%			50%			30%			10%			0
pw	50%	30%	10%	50%	30%	10%	50%	30%	10%	50%	30%	10%	50%	30%	10%	0
pfc	20%			20%			20%			20%			20%			0
RCR	RCR:Room Cavity Ratio						Coefficients of Utilization(CU)									
0.0	1.19	1.19	1.19	1.16	1.16	1.16	1.10	1.10	1.10	1.05	1.05	1.05	1.01	1.01	1.01	.99
1.0	1.05	1.01	.97	1.02	.99	.95	.98	.95	.92	.94	.91	.89	.90	.88	.86	.84
2.0	.92	.85	.79	.90	.84	.78	.86	.81	.76	.82	.78	.75	.79	.76	.73	.70
3.0	.80	.73	.66	.79	.71	.66	.76	.69	.64	.73	.67	.63	.70	.66	.62	.59
4.0	.71	.63	.56	.70	.62	.56	.67	.60	.55	.65	.59	.54	.62	.57	.53	.51
5.0	.64	.55	.48	.62	.54	.48	.60	.53	.47	.58	.52	.47	.56	.50	.46	.44
6.0	.57	.48	.42	.56	.48	.42	.54	.47	.41	.52	.46	.41	.51	.45	.40	.38
7.0	.52	.43	.37	.51	.43	.37	.49	.42	.36	.48	.41	.36	.46	.40	.36	.34
8.0	.47	.39	.33	.46	.38	.33	.45	.38	.32	.44	.37	.32	.42	.36	.32	.30
9.0	.43	.35	.29	.43	.35	.29	.41	.34	.29	.40	.34	.29	.39	.33	.29	.27
10.0	.40	.32	.27	.39	.32	.27	.38	.31	.26	.37	.31	.26	.36	.30	.26	.24



C Range: 0 - 360DEG  
 C Interval: 22.5DEG  
 Test Speed: HIGH  
 Temperature:25.3DEG  
 Operators:DAMIN  
 Test Date:15 June 2020

γ Range: 0 - 180DEG  
 γ Interval: 1.0DEG  
 Test System:EVERFINE GO-2000B\_V1 SYSTEM V2.00.426  
 Humidity:65.0%  
 Test Distance:7.550m [K=1.0000]  
 Remarks:

## WEC AND CCEC

Test:U:220.05V I:0.6917A P:150.44W PF:0.9883 Freq:49.99Hz Lamp Flux:23218.1x1 lm		
NAME: UHB1015-150W	TYPE:	WEIGHT:
SPEC.: 260*260	DIM.:	SERIAL No.: 20200615008
MFR.:	SUR.: 260*260	Shielding Angle:

pcc	80%			70%			50%			30%			10%			0	
pw	50%	30%	10%	50%	30%	10%	50%	30%	10%	50%	30%	10%	50%	30%	10%	0	
pfc	20%			20%			20%			20%			20%			0	
RCR	RCR:Room Cavity Ratio						Wall Exitance Coefficients(WEC)										
0.0																	
1.0	.288	.164	.052	.281	.160	.051	.267	.153	.049	.254	.146	.047	.242	.140	.045		
2.0	.278	.152	.047	.272	.150	.046	.259	.144	.045	.248	.139	.044	.238	.134	.042		
3.0	.261	.139	.042	.255	.137	.041	.244	.132	.040	.234	.128	.039	.225	.125	.039		
4.0	.243	.126	.037	.238	.124	.037	.228	.121	.036	.219	.118	.036	.211	.115	.035		
5.0	.226	.115	.033	.221	.114	.033	.213	.111	.033	.205	.108	.032	.197	.105	.032		
6.0	.210	.105	.030	.206	.104	.030	.199	.102	.030	.191	.099	.029	.185	.097	.029		
7.0	.196	.097	.028	.193	.096	.027	.186	.094	.027	.179	.092	.027	.173	.090	.026		
8.0	.184	.090	.025	.181	.089	.025	.174	.087	.025	.169	.085	.025	.163	.084	.024		
9.0	.173	.083	.023	.170	.083	.023	.164	.081	.023	.159	.080	.023	.154	.078	.023		
10.0	.162	.078	.022	.160	.077	.022	.155	.076	.021	.150	.074	.021	.145	.073	.021		

pcc	80%			70%			50%			30%			10%			0
pw	50%	30%	10%	50%	30%	10%	50%	30%	10%	50%	30%	10%	50%	30%	10%	0
pfc	20%			20%			20%			20%			20%			0
RCR	RCR:Room Cavity Ratio						Ceiling Cavity Exitance Coefficients(CCEC)									
0.0	.200	.200	.200	.171	.171	.171	.117	.117	.117	.067	.067	.067	.021	.021	.021	
1.0	.188	.166	.146	.161	.142	.125	.110	.098	.087	.063	.057	.050	.020	.018	.016	
2.0	.180	.142	.109	.154	.122	.095	.106	.084	.066	.061	.049	.039	.020	.016	.013	
3.0	.173	.124	.085	.148	.107	.074	.102	.074	.052	.059	.043	.031	.019	.014	.010	
4.0	.165	.111	.069	.142	.096	.060	.097	.067	.042	.056	.039	.025	.018	.013	.008	
5.0	.158	.100	.058	.136	.087	.050	.093	.061	.035	.054	.036	.021	.017	.012	.007	
6.0	.151	.092	.050	.130	.080	.043	.090	.056	.031	.052	.033	.018	.017	.011	.006	
7.0	.144	.085	.043	.124	.074	.038	.086	.052	.027	.050	.030	.016	.016	.010	.005	
8.0	.138	.079	.039	.119	.069	.034	.082	.048	.024	.048	.028	.014	.015	.009	.005	
9.0	.132	.074	.035	.114	.065	.031	.079	.045	.022	.046	.027	.013	.015	.009	.004	
10.0	.127	.070	.033	.109	.061	.028	.076	.043	.020	.044	.025	.012	.014	.008	.004	

C Range: 0 - 360DEG  
C Interval: 22.5DEG  
Test Speed: HIGH  
Temperature:25.3DEG  
Operators:DAMIN  
Test Date:15 June 2020

γ Range: 0 - 180DEG  
γ Interval: 1.0DEG  
Test System:EVERFINE GO-2000B\_V1 SYSTEM V2.00.426  
Humidity:65.0%  
Test Distance:7.550m [K=1.0000]  
Remarks:

## UGR(Unified Glare Rating) Table

Test:U:220.05V I:0.6917A P:150.44W PF:0.9883 Freq:49.99Hz Lamp Flux:23218.1x1 lm											
NAME: UHB1015-150W					TYPE:			WEIGHT:			
SPEC.: 260*260					DIM.:			SERIAL No.: 20200615008			
MFR.:					SUR.: 260*260			Shielding Angle:			
ceiling/cavity	0.7	0.7	0.5	0.5	0.3	0.7	0.7	0.5	0.5	0.3	
walls	0.5	0.3	0.5	0.3	0.3	0.5	0.3	0.5	0.3	0.3	
working plane	0.2	0.2	0.2	0.2	0.2	0.2	0.2	0.2	0.2	0.2	
Room dimensions		Viewed crosswise				Viewed endwise					
x = 2H y = 2H		30.9	32.5	31.3	32.8	33.2	30.8	32.4	31.1	32.7	33.0
3H		32.5	33.9	32.9	34.3	34.7	32.3	33.8	32.7	34.1	34.5
4H		32.9	34.3	33.3	34.6	35.0	32.7	34.1	33.2	34.5	34.9
6H		33.0	34.3	33.5	34.7	35.1	32.9	34.1	33.3	34.5	34.9
8H		33.0	34.2	33.5	34.6	35.1	32.8	34.0	33.3	34.4	34.9
12H		33.0	34.2	33.5	34.6	35.0	32.8	34.0	33.3	34.4	34.8
4H 2H		31.5	32.8	31.9	33.2	33.6	31.4	32.7	31.8	33.1	33.5
3H		33.3	34.4	33.7	34.8	35.2	33.1	34.2	33.5	34.6	35.0
4H		33.7	34.7	34.2	35.2	35.7	33.5	34.6	34.0	35.0	35.5
6H		33.9	34.8	34.4	35.3	35.8	33.7	34.6	34.2	35.0	35.5
8H		33.9	34.7	34.4	35.2	35.7	33.7	34.5	34.2	35.0	35.5
12H		33.9	34.7	34.4	35.2	35.7	33.7	34.4	34.2	34.9	35.4
8H 4H		33.9	34.7	34.4	35.2	35.7	33.7	34.5	34.1	35.0	35.4
6H		34.1	34.8	34.6	35.3	35.8	33.9	34.5	34.4	35.0	35.5
8H		34.1	34.7	34.7	35.3	35.8	33.9	34.5	34.4	35.0	35.5
12H		34.1	34.7	34.7	35.2	35.8	33.9	34.4	34.4	34.9	35.5
12H 4H		33.9	34.6	34.4	35.1	35.6	33.7	34.4	34.2	34.9	35.4
6H		34.1	34.7	34.6	35.2	35.8	33.8	34.4	34.4	34.9	35.5
8H		34.1	34.7	34.7	35.2	35.8	33.9	34.4	34.4	34.9	35.5
CIE190: 2010											

CIE190: 2010  
Area: 0.0363 m2

C Range: 0 - 360DEG  
C Interval: 22.5DEG  
Test Speed: HIGH  
Temperature:25.3DEG  
Operators:DAMIN  
Test Date:15 June 2020

γ Range: 0 - 180DEG  
γ Interval: 1.0DEG  
Test System:EVERFINE GO-2000B\_V1 SYSTEM V2.00.426  
Humidity:65.0%  
Test Distance:7.550m [K=1.0000]  
Remarks:

### UTILIZATION FACTORS TABLE

Test:U:220.05V I:0.6917A P:150.44W PF:0.9883 Freq:49.99Hz Lamp Flux:23218.1x1 lm		
NAME: UHB1015-150W	TYPE:	WEIGHT:
SPEC.: 260*260	DIM.:	SERIAL No.: 20200615008
MFR.:	SUR.: 260*260	Shielding Angle:

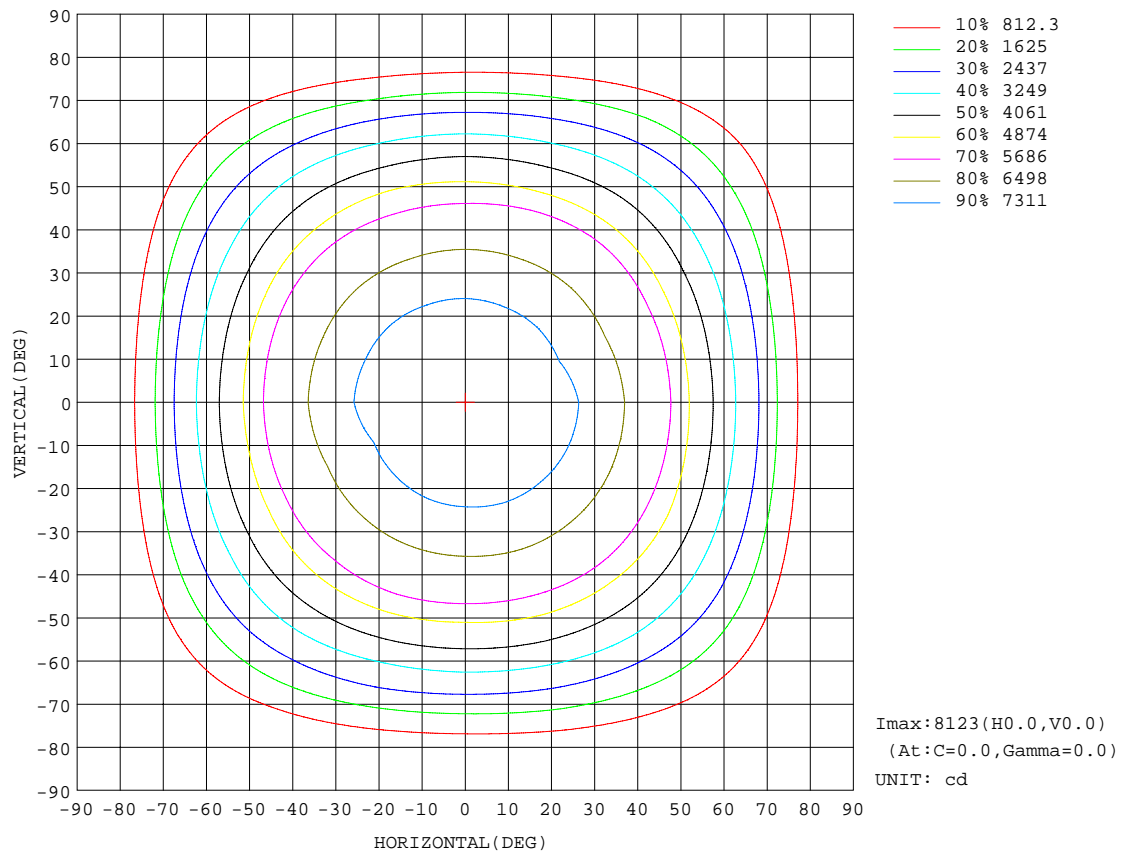
REFLECTANCE										
Ceiling	0.8	0.8	0.8	0.7	0.7	0.7	0.5	0.5	0.5	0
Walls	0.7	0.5	0.3	0.7	0.5	0.3	0.7	0.5	0.3	0
Working plane	0.2	0.2	0.2	0.2	0.2	0.2	0.2	0.2	0.2	0
ROOM INDEX	UTILIZATION FACTORS(PERCENT) $k(RI) \times RCR = 5$									
$k = 0.60$	57	46	39	57	46	39	55	45	38	32
0.80	68	56	49	67	56	49	65	55	48	41
1.00	76	66	58	75	65	58	73	66	57	50
1.25	84	73	66	82	73	66	79	71	65	58
1.50	89	79	72	87	78	72	84	76	71	63
2.00	96	87	81	94	86	80	90	84	79	71
2.50	100	92	86	97	91	85	93	88	83	75
3.00	103	96	91	101	95	90	96	92	88	79
4.00	107	101	97	104	99	95	100	96	93	84
5.00	109	105	101	107	102	99	102	99	96	86
ROOM INDEX	UF(total)									Direct
According to DIN EN 13032-2 2004										
Suspended										
SHRNOM = 1.25										

C Range: 0 - 360DEG  
C Interval: 22.5DEG  
Test Speed: HIGH  
Temperature:25.3DEG  
Operators:DAMIN  
Test Date:15 June 2020

$\gamma$  Range: 0 - 180DEG  
 $\gamma$  Interval: 1.0DEG  
Test System:EVERFINE GO-2000B\_V1 SYSTEM V2.00.426  
Humidity:65.0%  
Test Distance:7.550m [K=1.0000]  
Remarks:

**ISOCANDELA DIAGRAM**

Test:U:220.05V I:0.6917A P:150.44W PF:0.9883 Freq:49.99Hz Lamp Flux:23218.1x1 lm		
NAME: UHB1015-150W	TYPE:	WEIGHT:
SPEC.: 260*260	DIM.:	SERIAL No.: 20200615008
MFR.:	SUR.: 260*260	Shielding Angle:



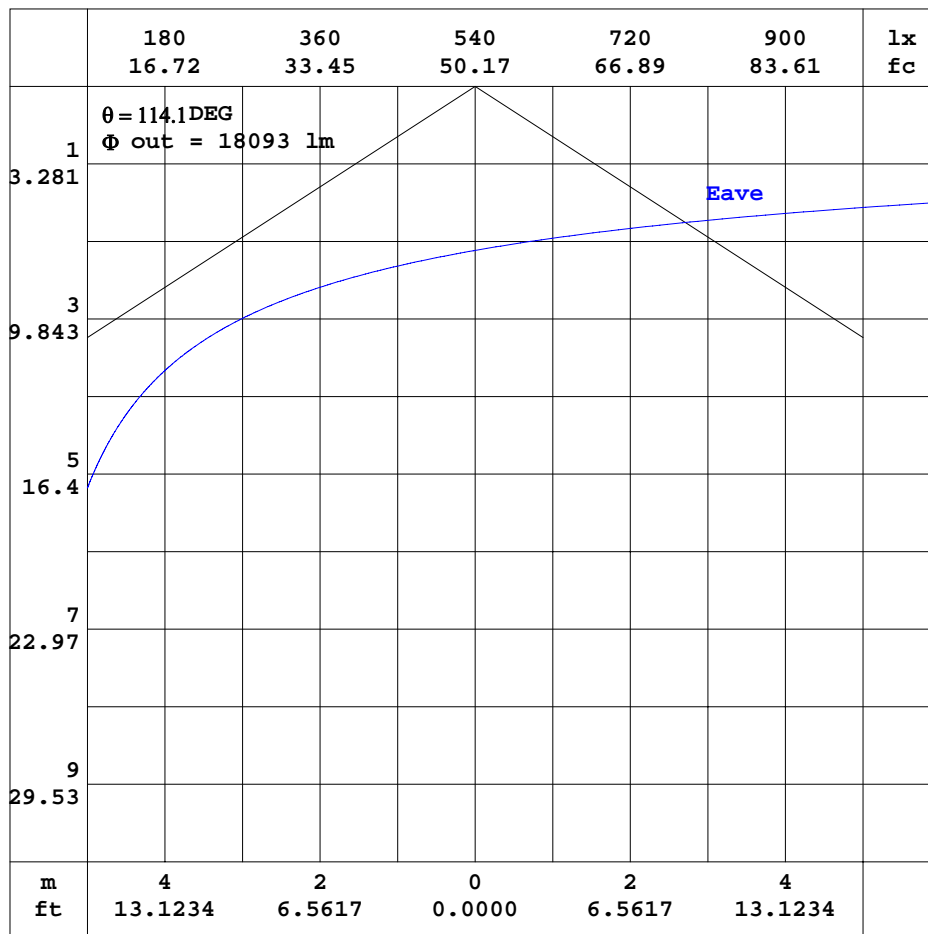
C Range: 0 - 360DEG  
 C Interval: 22.5DEG  
 Test Speed: HIGH  
 Temperature: 25.3DEG  
 Operators: DAMIN  
 Test Date: 15 June 2020

γ Range: 0 - 180DEG  
 γ Interval: 1.0DEG  
 Test System: EVERFINE GO-2000B\_V1 SYSTEM V2.00.426  
 Humidity: 65.0%  
 Test Distance: 7.550m [K=1.0000]  
 Remarks:



### AAI CURVES

Test:U:220.05V I:0.6917A P:150.44W PF:0.9883 Freq:49.99Hz Lamp Flux:23218.1x1 lm		
NAME: UHB1015-150W	TYPE:	WEIGHT:
SPEC.: 260*260	DIM.:	SERIAL No.: 20200615008
MFR.:	SUR.: 260*260	Shielding Angle:



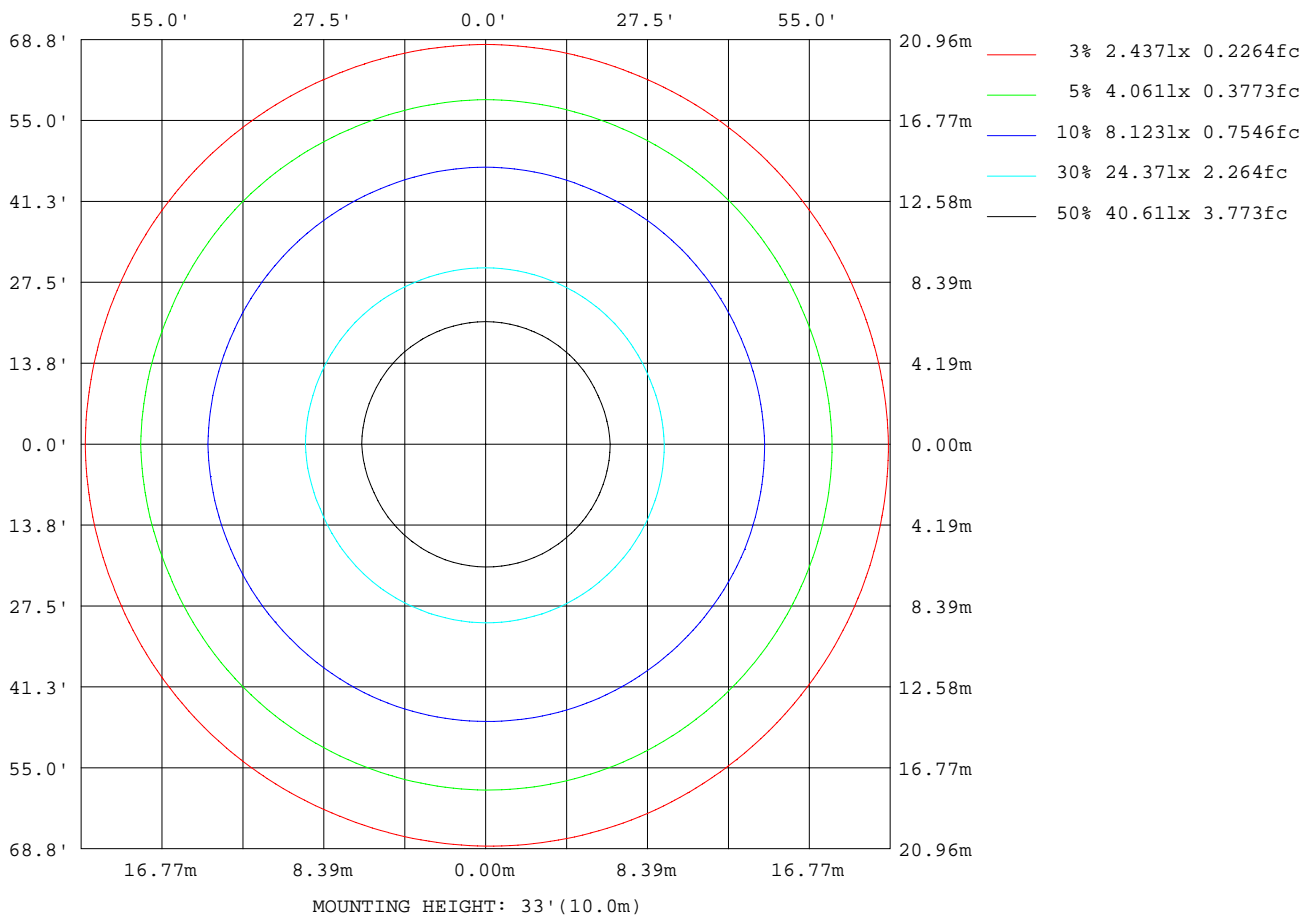
Note: The Curves indicate the illuminated area and the average illumination when the luminaire is at different distance.

C Range: 0 - 360DEG  
 C Interval: 22.5DEG  
 Test Speed: HIGH  
 Temperature: 25.3DEG  
 Operators: DAMIN  
 Test Date: 15 June 2020

$\gamma$  Range: 0 - 180DEG  
 $\gamma$  Interval: 1.0DEG  
 Test System: EVERFINE GO-2000B\_V1 SYSTEM V2.00.426  
 Humidity: 65.0%  
 Test Distance: 7.550m [K=1.0000]  
 Remarks:

ISOLUX DIAGRAM

Test:U:220.05V I:0.6917A P:150.44W PF:0.9883 Freq:49.99Hz Lamp Flux:23218.1x1 lm		
NAME: UHB1015-150W	TYPE:	WEIGHT:
SPEC.: 260*260	DIM.:	SERIAL No.: 20200615008
MFR.:	SUR.: 260*260	Shielding Angle:



C Range: 0 - 360DEG  
C Interval: 22.5DEG  
Test Speed: HIGH  
Temperature: 25.3DEG  
Operators: DAMIN  
Test Date: 15 June 2020

γ Range: 0 - 180DEG  
γ Interval: 1.0DEG  
Test System: EVERFINE GO-2000B\_V1 SYSTEM V2.00.426  
Humidity: 65.0%  
Test Distance: 7.550m [K=1.0000]  
Remarks:

### LED Avg.L Report

Test:U:220.05V I:0.6917A P:150.44W PF:0.9883 Freq:49.99Hz Lamp Flux:23218.1x1 lm		
NAME: UHB1015-150W	TYPE:	WEIGHT:
SPEC.: 260*260	DIM.:	SERIAL No.: 20200615008
MFR.:	SUR.: 260*260	Shielding Angle:

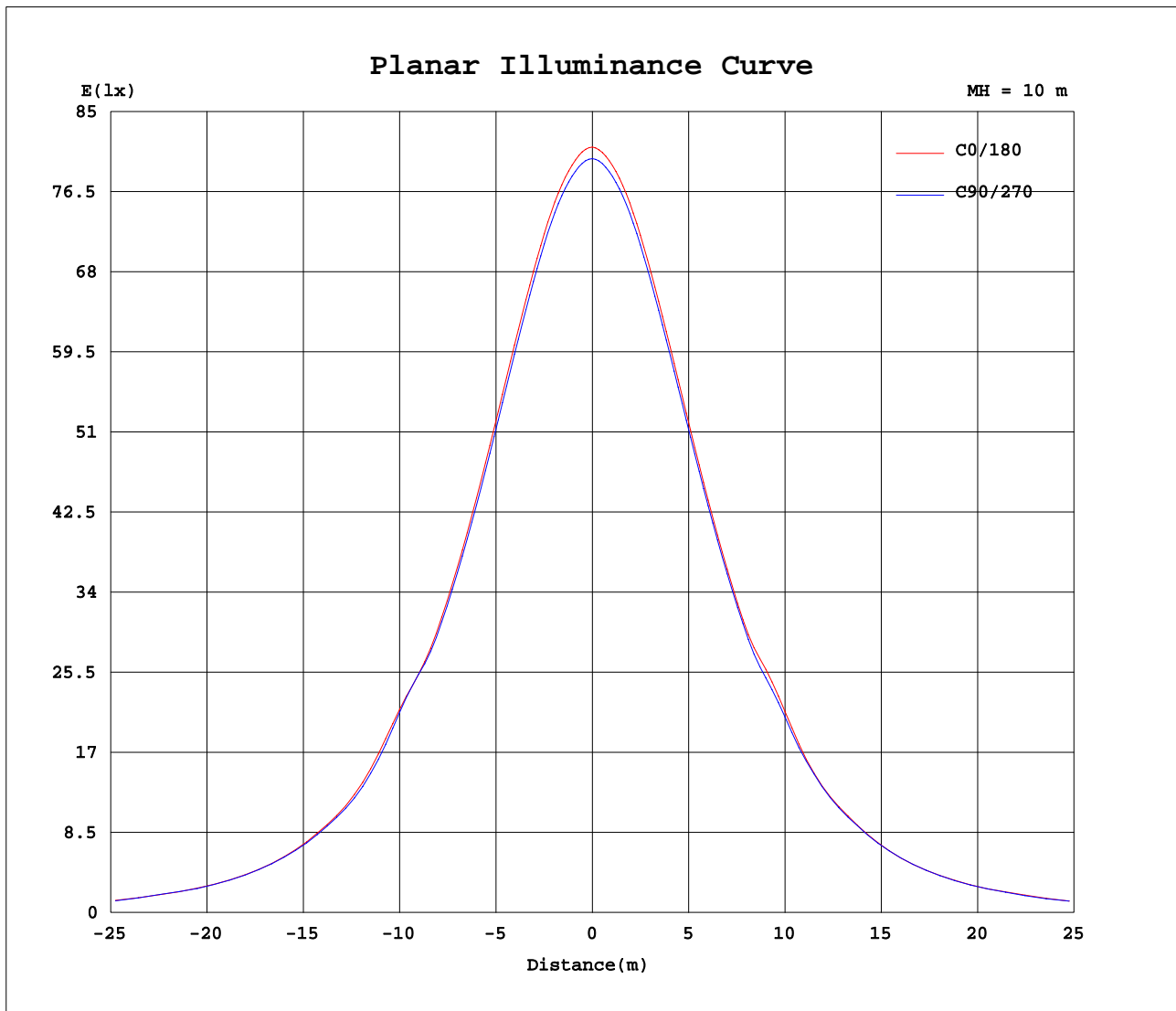
AvgL	cd/m2
L_0~180(65)av	190066
L_0~180(75)av	118109
L_0~180(85)av	23059
L_90~270(65)av	189463
L_90~270(75)av	116843
L_90~270(85)av	22866
L_45(65)av	187358
L_45(75)av	117251
L_45(85)av	24379

Standard: GB/T 29293-2012

C Range: 0 - 360DEG  
C Interval: 22.5DEG  
Test Speed: HIGH  
Temperature:25.3DEG  
Operators:DAMIN  
Test Date:15 June 2020

γ Range: 0 - 180DEG  
γ Interval: 1.0DEG  
Test System:EVERFINE GO-2000B\_V1 SYSTEM V2.00.426  
Humidity:65.0%  
Test Distance:7.550m [K=1.0000]  
Remarks:

## Planar Illuminance Curve



C Range: 0 - 360DEG  
C Interval: 22.5DEG  
Test Speed: HIGH  
Temperature: 25.3DEG  
Operators: DAMIN  
Test Date: 15 June 2020

$\gamma$  Range: 0 - 180DEG  
 $\gamma$  Interval: 1.0DEG  
Test System: EVERFINE GO-2000B\_V1 SYSTEM V2.00.426  
Humidity: 65.0%  
Test Distance: 7.550m [K=1.0000]  
Remarks:

## LUMINOUS DISTRIBUTION INTENSITY DATA

Test:U:220.05V I:0.6917A P:150.44W PF:0.9883 Freq:49.99Hz Lamp Flux:23218.1x1 lm									
NAME: UHB1015-150W					TYPE:				
SPEC.: 260*260					DIM.:				
MFR.:					SUR.: 260*260				
					Shielding Angle:				

Table--1

UNIT: cd

C(DEC)	0	22.5	45	67.5	90	112.5	135	157.5	180	202.5	225	247.5	270	292.5	315	337.5			
γ (DEC)																			
0	8123	8084	8053	8024	8001	7980	7964	7949	8123	8084	8053	8024	8001	7980	7964	7949			
5	8077	8044	8012	7985	7957	7937	7915	7900	8070	8032	8000	7971	7953	7934	7923	7909			
10	7996	7965	7933	7904	7876	7855	7832	7817	7985	7942	7915	7885	7869	7853	7845	7832			
15	7853	7825	7792	7764	7733	7713	7685	7671	7835	7793	7768	7737	7721	7708	7706	7693			
20	7650	7624	7590	7564	7528	7509	7481	7465	7626	7582	7562	7529	7516	7503	7506	7494			
25	7391	7363	7324	7305	7267	7247	7216	7200	7360	7313	7292	7260	7256	7239	7247	7235			
30	7061	7036	6998	6981	6941	6917	6886	6873	7026	6976	6958	6925	6928	6912	6922	6916			
35	6667	6651	6615	6599	6559	6535	6499	6488	6625	6576	6557	6527	6536	6525	6539	6535			
40	6240	6222	6190	6194	6164	6149	6137	6142	6253	6216	6177	6131	6102	6105	6103	6117			
45	6097	6063	6065	6026	6011	5979	5896	5889	6031	5969	5933	5860	5867	5913	5980	5951			
50	5203	5230	5153	5139	5041	5055	5001	4968	5069	5059	5040	5048	5041	5042	5063	5083			
55	4464	4494	4440	4417	4378	4358	4302	4306	4399	4331	4331	4332	4367	4309	4331	4337			
60	3654	3659	3646	3651	3639	3588	3543	3510	3597	3516	3554	3536	3590	3575	3585	3567			
65	2928	2973	2946	2957	2941	2876	2853	2868	2904	2854	2838	2807	2872	2842	2860	2871			
70	2051	2072	2037	2033	2004	1998	1932	1897	1940	1903	1918	1889	1946	1947	1973	2015			
75	1159	1174	1178	1195	1160	1132	1066	1055	1060	1051	1034	1025	1036	1083	1128	1155			
80	410	428	429	422	394	398	363	342	344	335	328	315	333	350	394	412			
85	79.0	85.9	95.0	79.8	74.5	71.5	65.6	63.4	66.9	64.4	65.6	65.3	70.2	75.2	82.4	84.7			
90	38.0	38.0	37.8	37.7	37.6	37.4	37.4	37.3	40.3	40.2	40.1	39.9	39.8	39.7	39.6	39.5			
95	38.3	38.3	38.1	38.0	37.9	37.8	37.8	37.7	41.0	40.8	40.7	40.6	40.4	40.2	40.2	40.0			
100	39.2	39.1	39.0	38.9	38.8	38.7	38.7	38.6	42.0	41.9	41.8	41.6	41.4	41.3	41.1	41.0			
105	40.3	40.3	40.2	40.1	39.9	39.9	40.0	39.8	43.4	43.3	43.3	43.0	42.8	42.6	42.5	42.3			
110	47.1	41.6	41.4	41.4	41.2	41.1	41.1	41.0	50.6	44.9	44.9	44.5	44.3	44.2	44.1	43.9			
115	48.5	43.8	42.7	42.5	42.4	42.3	42.3	43.2	52.3	46.4	46.3	45.8	45.7	45.6	45.5	45.4			
120	49.6	47.4	43.9	43.8	43.3	43.4	43.6	49.5	54.9	51.2	47.8	47.1	47.2	46.9	46.9	49.7			
125	47.4	46.3	45.4	45.1	44.4	44.5	44.8	45.5	51.1	49.6	49.2	48.3	48.6	48.2	48.5	49.1			
130	46.8	46.7	46.6	46.3	45.7	45.5	45.9	46.4	51.3	50.8	50.5	49.6	49.8	49.6	49.9	49.7			
135	47.8	47.8	47.8	47.4	47.0	46.5	47.2	47.8	52.3	51.9	51.7	51.0	50.8	51.3	51.3	50.9			
140	48.9	49.2	49.1	49.1	48.5	48.0	48.6	49.2	53.2	53.0	52.9	52.5	52.1	52.9	52.4	52.1			
145	50.4	50.3	50.7	50.7	50.0	49.6	50.4	50.4	54.4	54.4	54.3	53.9	53.5	54.1	53.8	53.5			
150	51.8	51.9	52.6	52.7	51.6	51.4	52.3	52.0	55.9	55.6	55.8	54.9	55.0	55.3	55.1	54.6			
155	53.5	53.8	54.6	54.9	53.7	53.6	54.0	53.8	57.3	56.9	57.2	56.6	56.9	57.0	56.7	55.9			
160	55.8	56.4	56.6	57.3	56.0	55.9	55.9	56.0	58.5	58.0	58.4	57.7	58.5	58.5	58.0	57.3			
165	58.0	58.4	58.3	58.9	58.0	57.4	57.4	57.8	59.7	59.3	59.1	58.7	59.5	59.7	58.9	58.2			
170	59.8	59.4	59.5	59.9	58.9	58.0	58.7	59.0	59.8	59.5	59.2	58.5	59.3	59.2	59.0	58.2			
175	60.5	60.2	60.2	60.3	59.7	58.8	59.3	59.6	59.7	59.0	58.9	58.3	58.7	58.3	58.2	57.9			
180	59.7	59.5	59.4	58.8	58.9	58.5	58.7	58.2	59.9	59.3	59.6	58.6	59.0	58.4	58.8	58.1			

C Range: 0 - 360DEG

C Interval: 22.5DEG

Test Speed: HIGH

Temperature:25.3DEG

Operators:DAMIN

Test Date:15 June 2020

γ Range: 0 - 180DEG

γ Interval: 1.0DEG

Test System:EVERFINE GO-2000B\_V1 SYSTEM V2.00.426

Humidity:65.0%

Test Distance:7.550m [K=1.0000]

Remarks: